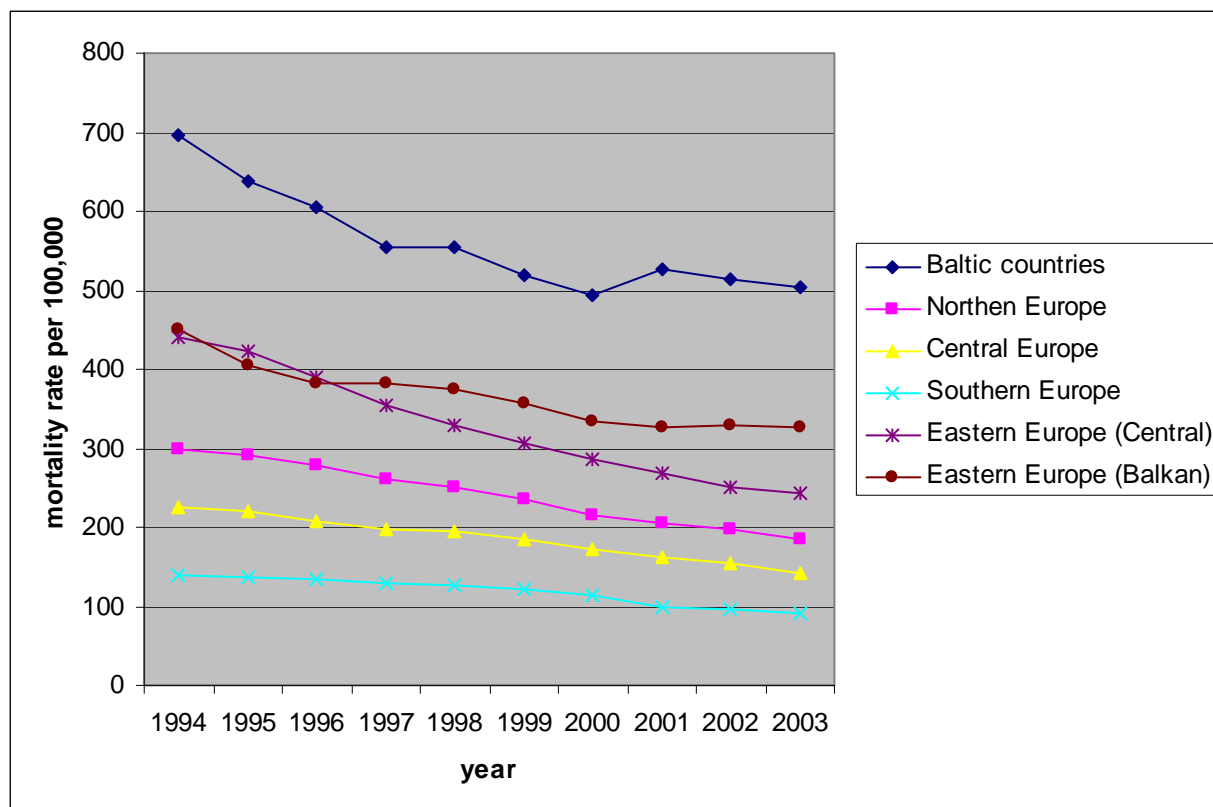


Figure 2. Age-standardized mortality rates per 100,000. Trends for ischaemic heart diseases (codes ICD-9 410-14)-Men aged 35-74 years



Baltic Countries include: Estonia, Latvia, Lithuania

Northern Europe includes: Denmark, Ireland, Malta, Finland, Sweden, United Kingdom

Central Europe includes: Belgium, Germany, Luxembourg, Netherlands, Austria, Slovenia

Southern Europe includes: Greece, Spain, France, Italy, Portugal

Eastern Europe (Central) includes: Czech Republic, Poland, Slovakia

Eastern Europe (Balkan) includes: Bulgaria, Hungary, Romania

1994 and 1995 Baltic Countries mortality rates are calculated without considering Latvia rates (missing data)

2002 and 2003 Northern Europe mortality rate is calculated without considering Denmark rate (missing data)

1998, 1999, 2000, 2001, 2002 and 2003 Central Europe mortality rates are calculated without considering Belgium rates (missing data)

1994, 1995, 1996, 1997, 1998, 1999, 2000 Southern Europe mortality rates are calculated without considering France rates (missing data)

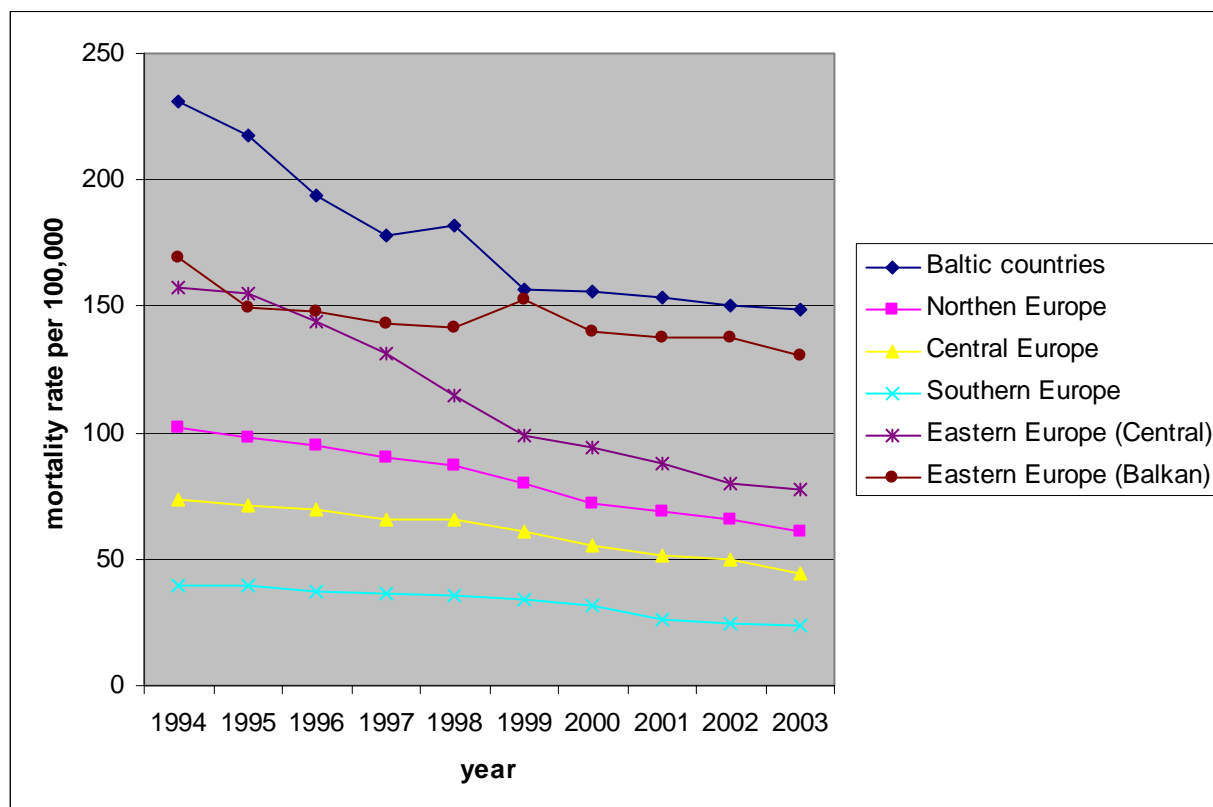
1994, 1995, 1996, 1997 and 1998 Eastern Europe (Central) mortality rates are calculated without considering Poland, and Slovakia rates (missing data)

1994 Eastern Europe (Balkan) mortality rate is calculated without considering Bulgaria and Romania rates (missing data)

1995, 1996, 1997 and 1998 Eastern Europe (Balkan) mortality rates are calculated without considering Romania (missing data)

Source: EUROSTAT(<http://epp.eurostat.ec.europa.eu>) -2007

Figure 3. Age-standardized mortality rates per 100,000. Trends for ischaemic heart diseases (codes ICD-9 410-14)-Women aged 35-74 years



Baltic Countries include: Estonia, Latvia, Lithuania

Northern Europe includes: Denmark, Ireland, Malta, Finland, Sweden, United Kingdom

Central Europe includes: Belgium, Germany, Luxembourg, Netherlands, Austria, Slovenia

Southern Europe includes: Greece, Spain, France, Italy, Portugal

Eastern Europe (Central) includes: Czech Republic, Poland, Slovakia

Eastern Europe (Balkan) includes: Bulgaria, Hungary, Romania

1994 and 1995 Baltic Countries mortality rates are calculated without considering Latvia rates (missing data)

2002 and 2003 Northern Europe mortality rate is calculated without considering Denmark rate (missing data)

1998, 1999, 2000, 2001, 2002 and 2003 Central Europe mortality rates are calculated without considering Belgium rates (missing data)

1994, 1995, 1996, 1997, 1998, 1999, 2000 Southern Europe mortality rates are calculated without considering France rates (missing data)

1994, 1995, 1996, 1997 and 1998 Eastern Europe (Central) mortality rates are calculated without considering Poland, and Slovakia rates (missing data)

1994 Eastern Europe (Balkan) mortality rate is calculated without considering Bulgaria and Romania rates (missing data)

1995, 1996, 1997 and 1998 Eastern Europe (Balkan) mortality rates are calculated without considering Romania (missing data)

Source: EUROSTAT(<http://epp.eurostat.ec.europa.eu>) -2007